

## Blood Service

- Blood analysis of collected blood in the Algarve, processing and storage
- Blood grouping and serotyping of donor blood
- Virus detection: Hepatitis B and C, Human immunodeficiency virus (HIV), Syphilis and Human T-lymphotropic virus (HTLV)

### ADDRESS

Parque das Cidades  
S. João da Venda, Loulé/Faro  
8135-014 Almancil

**TEL.** 289 893 100

### OPENING HOURS

Monday to Friday, 09:30-16:30

### DONOR BLOOD COLLECTION

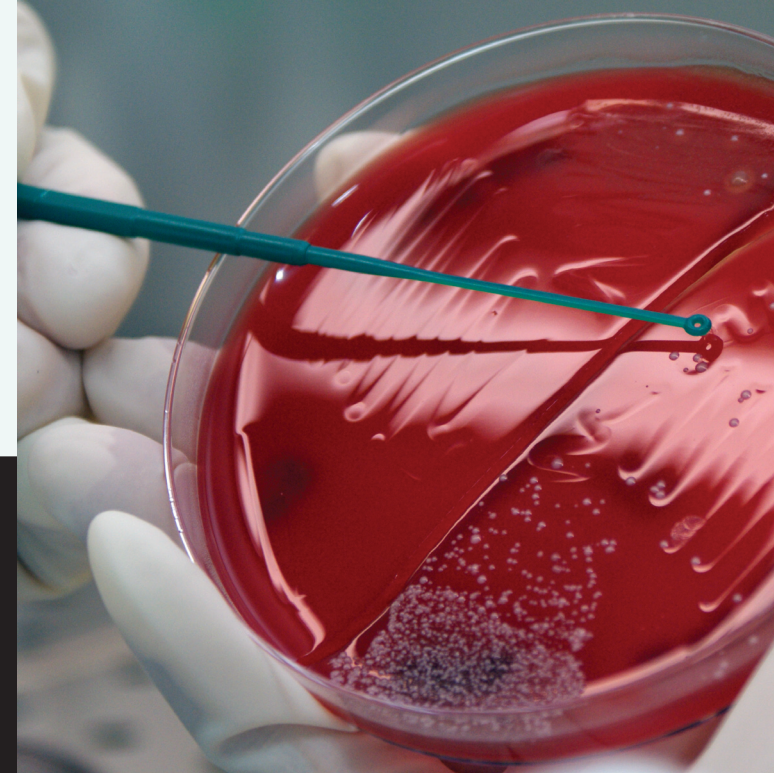
Monday to Saturday, 15:00-22:00

**REGIONAL PUBLIC  
HEALTH LABORATORY**  
DRA. LAURA AYRES

nata.pt

**REGIONAL PUBLIC  
HEALTH LABORATORY**  
DRA. LAURA AYRES

**A LABORATORY FOR THE 21ST CENTURY**



Administração Regional de  
Saúde do Algarve, I.P.



Ministério da Saúde

CLINICAL ANALYSES / PHYSICS-CHEMICS / MICROBIOLOGY / BLOOD SERVICE

Inaugurated on May 8, 2009, the Regional Public Health Laboratory Dra. Laura Ayres gathers quality services equipped with advanced technology to face public health challenges.

The Regional Public Health Laboratory Dra. Laura Ayres distinguishes itself as a strategic investigation and health science development pole for the university pre and post graduations in the Algarve as well as a modern unit and a laboratory for the 21st century.

The Laboratory englobes four great service areas: Clinical analyses, Physics-Chemics, Microbiology and Blood Service, having been certified with the Quality Certificate **NP EN ISO 9001:2008, nr 2010/CEP.3768**

## Clinical Analyses

- Bacteriology
- Biochemistry
- Diagnose of emerging diseases, West Nile Virus, Dengue and Malaria, in collaboration with the INSA
- Hematology
- Molecular biology

## Physics-Chemics

- Detection of salt level in food
- Physical-Chemical quality evaluation of water for human consumption, recreation pools and therapy pools

## Microbiology

- Legionella spp detection in sanitary water
- Microbiological quality evaluation of Bathing water (coastal water), recreation pools and therapy pools
- Microbiological quality evaluation of meals, utensils and surfaces
- Microbiological quality evaluation of Natural Mineral water
- Microbiological quality evaluation of water for human consumption (drinking water)

